
System Preference Manual



2X Software Ltd.





URL: www.2x.com

E-mail: info@2x.com

Information in this document is subject to change without notice. Companies, names, and data used in examples herein are fictitious unless otherwise noted. No part of this document may be reproduced or transmitted in any form or by any means, electronic or mechanical, for any purpose, without the express written permission of 2X SOFTWARE Ltd.

2X System Preference and 2X ThinClientOS are copyright of 2X SOFTWARE Ltd. © 1999-2009 2X SOFTWARE Ltd. All rights reserved.

Version 6.1 – Last updated June 19, 2009

Contents

Introduction.....	4
Overview.....	4
Opening System Preferences	4
2X ThinClientOS	4
System Preference Guide	5
Connections.....	5
General.....	6
Advanced	7
Authentication.....	8
Display	8
Network.....	9
Redirection.....	10
Local Applications	11
Client Settings.....	12
Network Settings.....	14
Wireless.....	15
Shadowing / Screen Saver	17
2X ThinClientServer / Updates.....	18
About.....	21
Security	22

Introduction

Overview

The *System Preferences* application developed by 2X Software allows you to configure your thin client to suit your needs and hardware.

Opening System Preferences

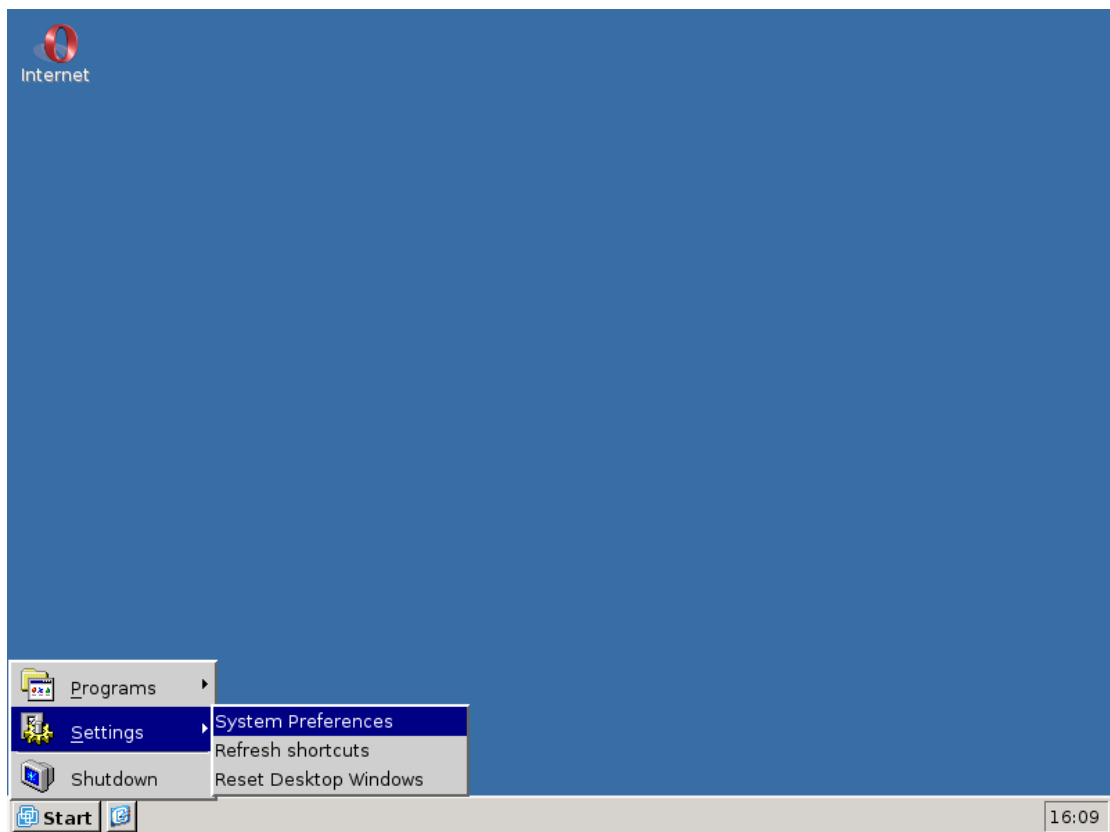


Figure 1: Open System Preferences

To open *System Preferences* simply click on *Start > Settings > System Preferences*.

2X ThinClientOS

To start using 2X ThinClientOS, click on *Start*. From here you can open any application on your system, change settings or shut down the machine. In *Start > Programs* you will find the applications installed on your system such as the browser. From *Start > Settings* you can open the *System Preferences* window, refresh the desktop shortcuts or refresh all the desktop windows visible.

System Preference Guide

Connections

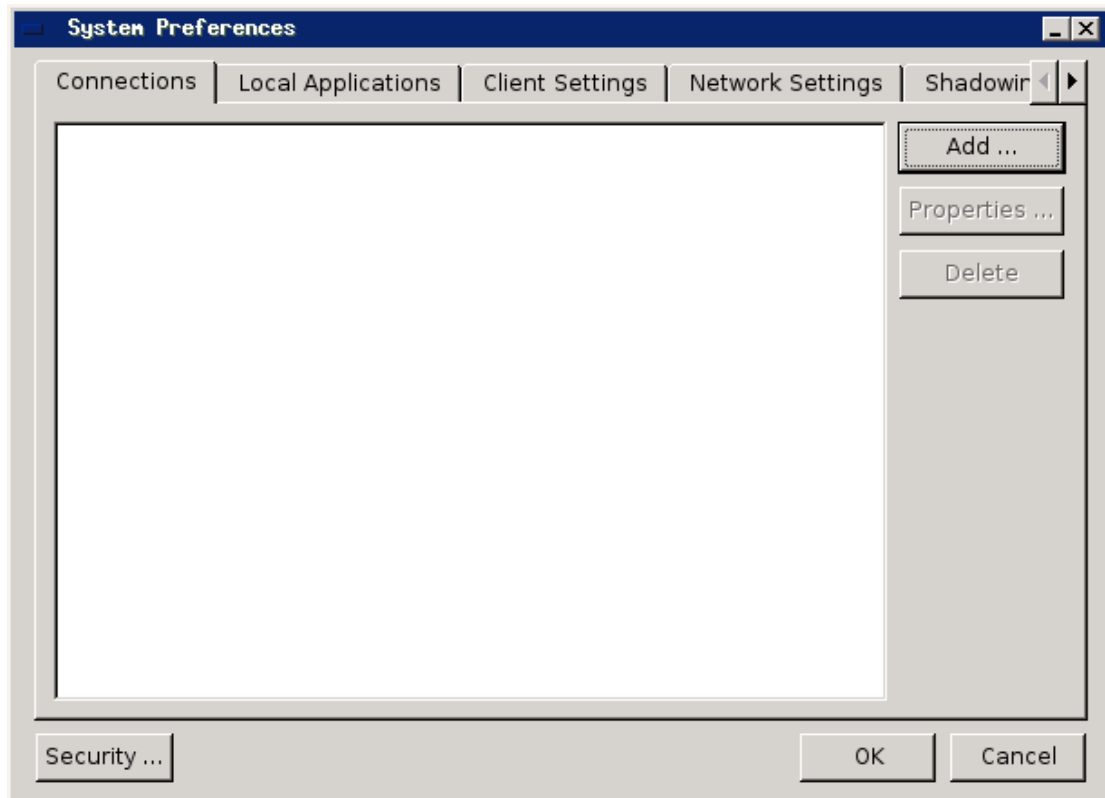


Figure 2: Connections

Item	Description
Add	Click to add a connection/application
Properties	Click to edit the selected existing connection.
Delete	Click to delete the selected connection

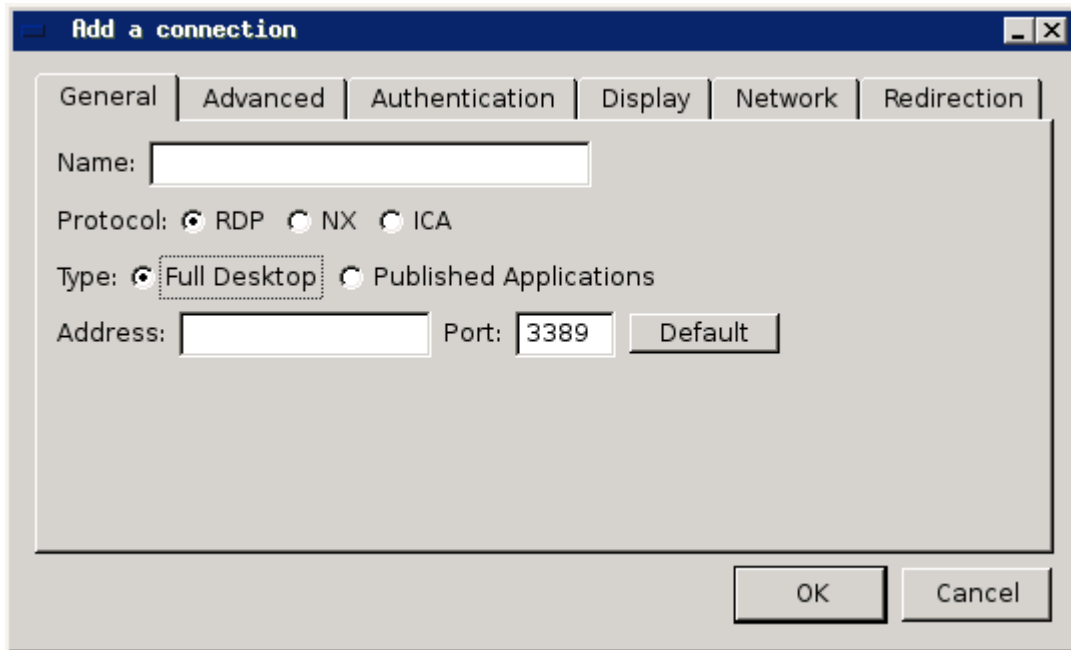


Figure 3: Adding a connection

General

Item	Description
Name	The name of the connection that is being created.
Protocol (RDP, NX, ICA)	The type of protocol you want to use in your connection.
Type	Choose to connect to a full virtual desktop or published applications.
Address	Input the host name or IP Address of the machine you want the thin client to connect to.
Port	Input the port that will be used by the connection.
Default	Click to set the port number to its default setting depending on the protocol and type choice.

Advanced

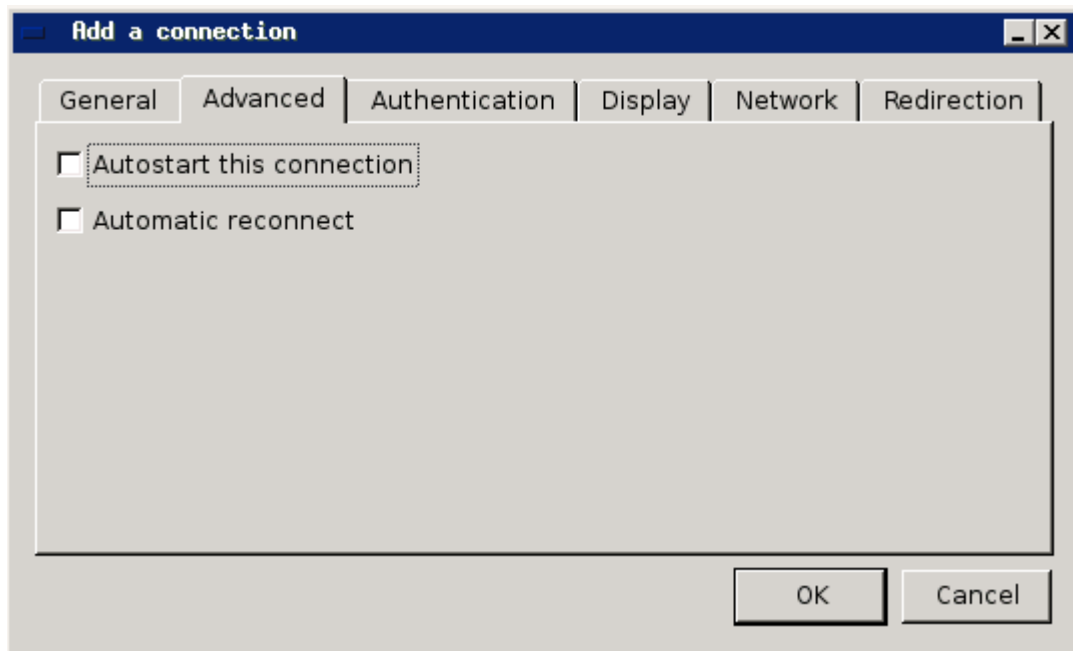


Figure 4: Advanced

Item	Description
Autostart this connection*	Check if you want the connection to start as soon as the operating system loads
Automatic reconnect	Enable this option if you would like to automatically reconnect to the server if the connection is lost.
Mode**	Choose the way you want to connect to your server. This can be done via a gateway, via a direct connection with the server or using Secure Sockets Layer (SSL) for added security.
Version**	Select the version of 2X ApplicationServer you are using.
HTTPS*↵	Select <i>Enable</i> to secure your connection.

* - Available for: Protocol – RDP/NX/ICA | Connection Type – Full Desktop

** - Available for: Protocol – RDP | Connection Type – Published Applications

*↵ - Available for: Protocol – ICA | Connection Type – Published Applications

Authentication

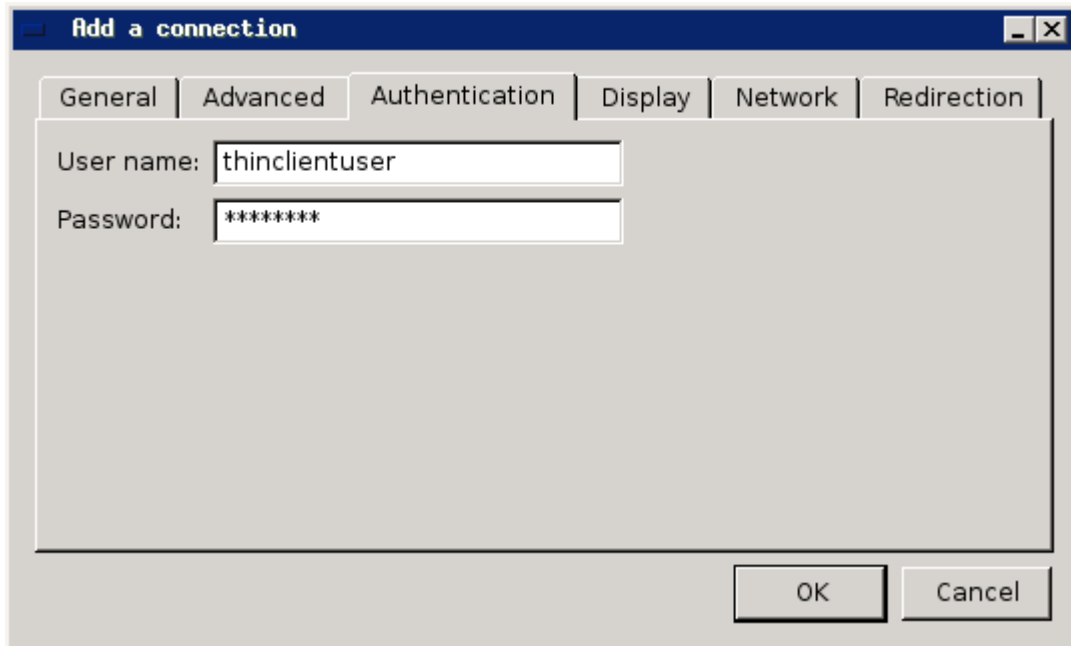


Figure 5: Authentication

Item

Description

Username

Input the username to be used by the connection.

Password

Input the password to access the connection.

Display

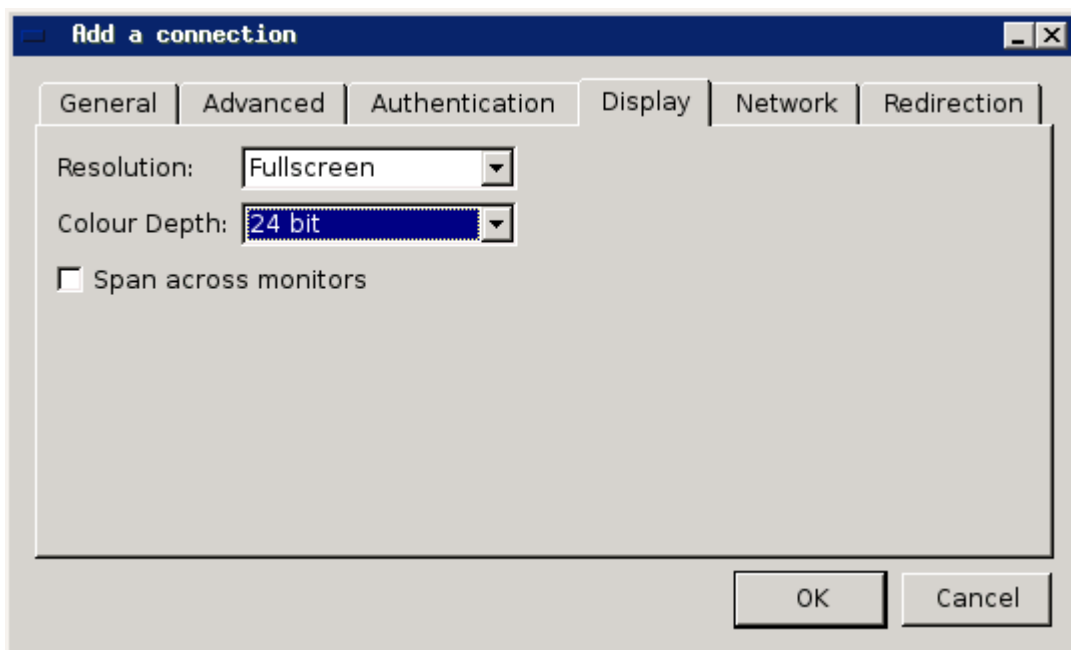


Figure 6: Display

Item	Description
Resolution	Choose the resolution that a full desktop connection will use when it opens in a new window. You can also choose to open the window in full screen.
Colour Depth	Choose the number of colours that the new window will use.
Span across monitors*	Use the whole area across multiple monitors to display the full desktop.
Use Primary Monitor**	Display the published application in the primary monitor.
Window Manager*↵	Choose between Gnome and KDE to manage Linux windows.

* - Only available with a Full Desktop connection using the RDP protocol

** - Only available with a Published Applications connection using the RDP protocol

*↵ - Only available with a Full Desktop connection using the NX protocol

Network

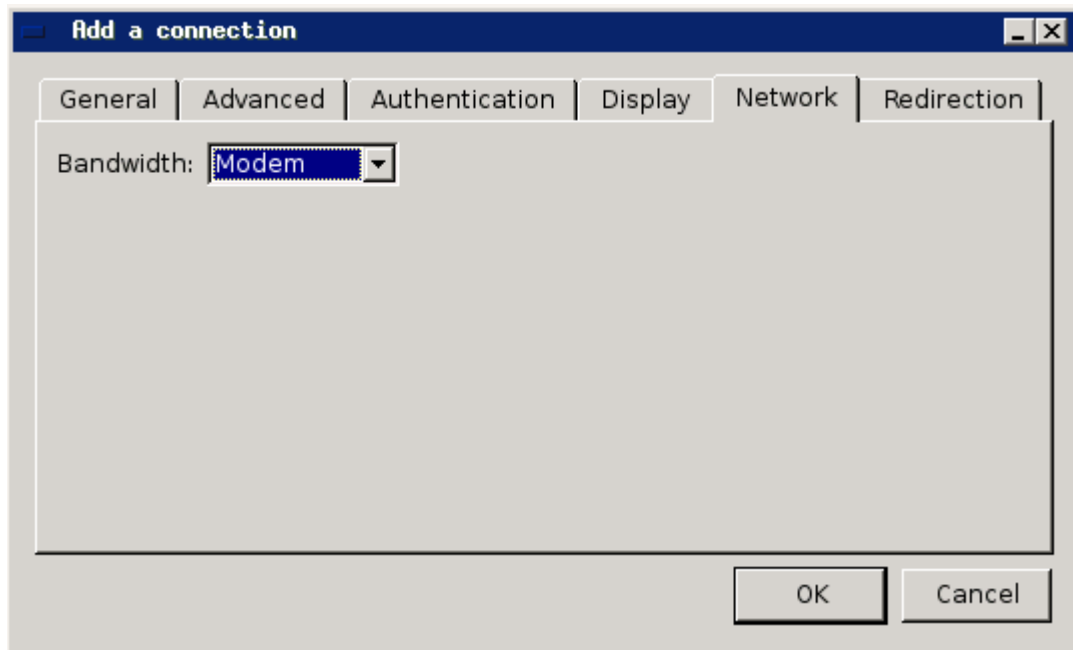


Figure 7: Network

Item	Description
Bandwidth	Select the bandwidth that the connection will use. The choice available depends on the type of bandwidth supported by the protocol previously selected.
Encryption*	Choose an encryption setting to encrypt the data being sent over the connection.

* - Only available for connections using the NX or ICA protocol

Redirection

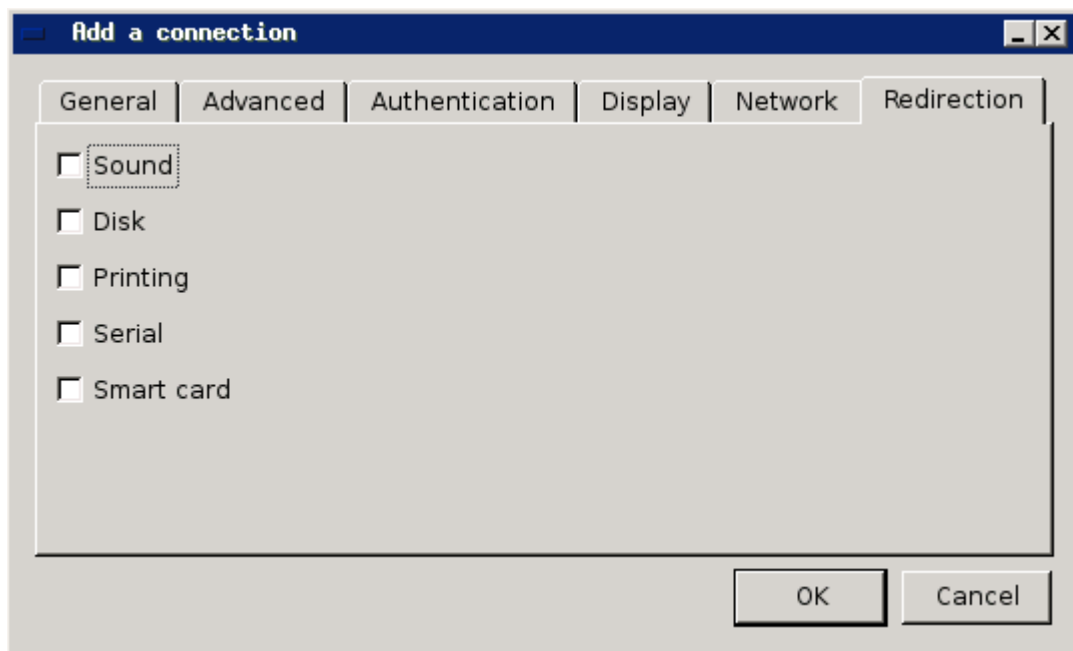


Figure 8: Redirection

Item	Description
Sound	Check if you would like to enable sound on your thin client.
Disk	Check to be able to see any local disks from the server.
Printing	Check if you want your thin client to access any network printers.
Serial*	Check if you want any applications on the server to access the thin client's serial port.
Smart Card**	Check if you require a smart card to access this published resource

* - Only available with a Full Desktop connection using RDP

** - Can be used only for published applications

Local Applications

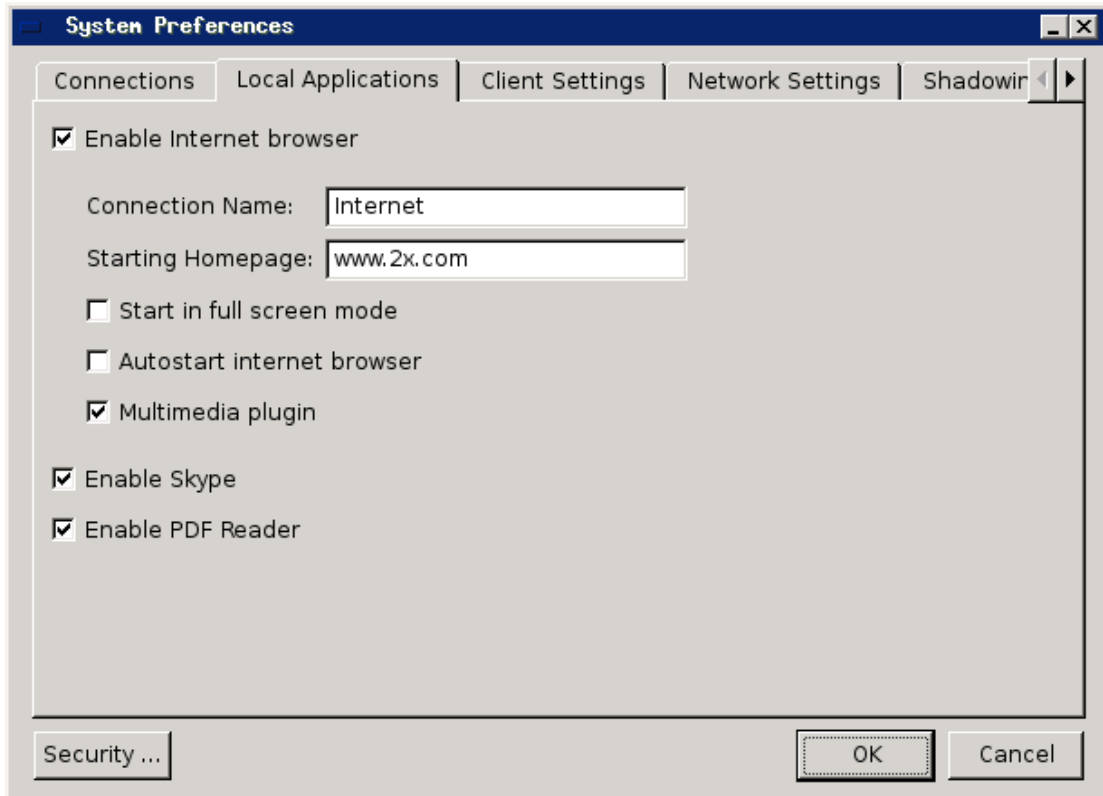


Figure 9: Internet Browser

Item	Description
Enable Internet Browser	Check to enable the use of an internet browser on the thin client.
Connection Name	Input a name for the internet connection.
Starting Homepage	Input a URL to be the default homepage for the browser.
Start in full screen mode	Check to load the browser in full screen mode whenever it is opened.
Autostart internet browser	Check to load the browser when the operating system loads.
Multimedia plugin	Check to enable the use of a plugin to play multimedia files inside the browser.
Enable Skype	Check to enable the use of Skype
Enable PDF Reader	Check to enable the use of PDF Reader.

Client Settings

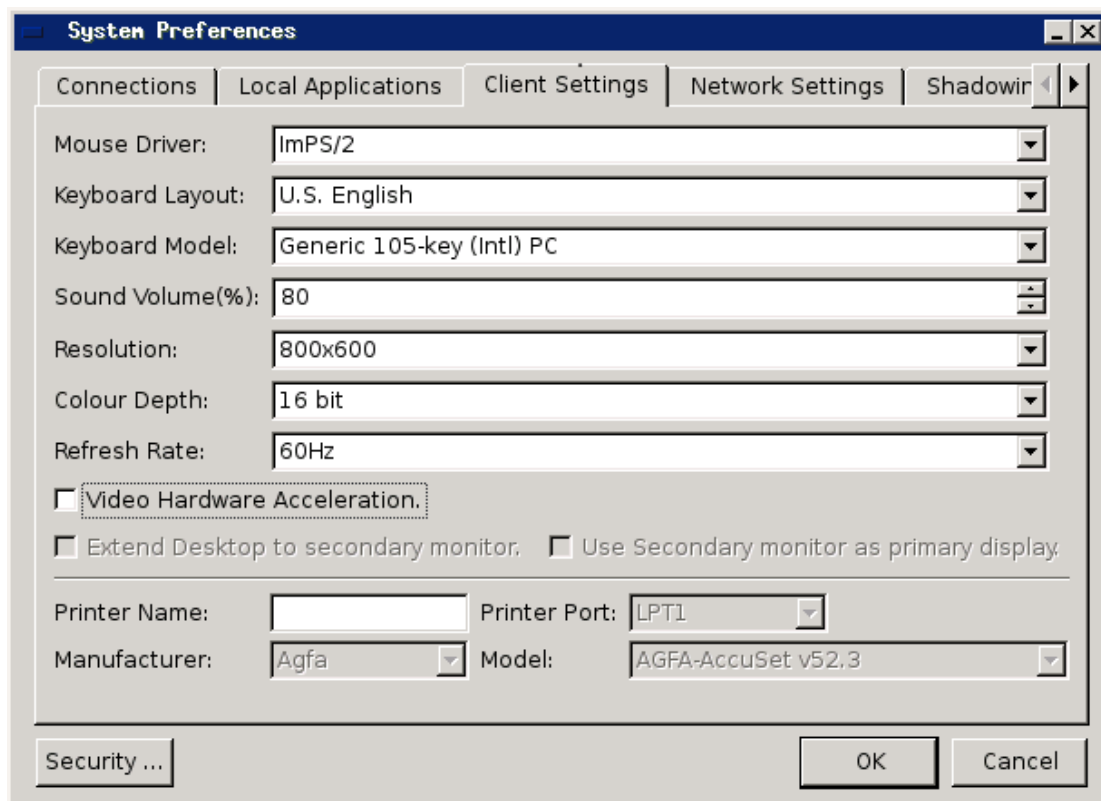


Figure 10: Client Settings

Item	Description
Mouse Driver	Choose the mouse driver you want to use depending on the make of your mouse.
Keyboard Layout	Choose a keyboard layout appropriate for your keyboard.
Keyboard Model	Choose your keyboard's model. If your model is not on the list, choose <i>Generic</i> .
Sound Volume	Select the sound volume for your thin client. The volume is set in percentage.
Resolution	Choose the resolution setting you would like for your thin client. It recommended to check what resolutions you monitor supports first.
Colour Depth	Choose the number of colours that will be used. Note that the higher the colour depth, the slower the performance.
Refresh Rate	Choose a refresh rate appropriate for your monitor.
Video Hardware Acceleration	Check to use the display driver specific to your thin client.
Extend Desktop to secondary monitor	Check to enable your secondary monitor to be used as an extension to your

Use Secondary monitor as primary display

Printer Name

Printer Port

Manufacturer

Model

primary display monitor.

Check to switch the picture of the primary display with that of the secondary display.

Input a name for the printer you will be using.

Select the port that will be used by the printer.

Choose the manufacturer of your printer.

Choose the model of your printer.

Network Settings

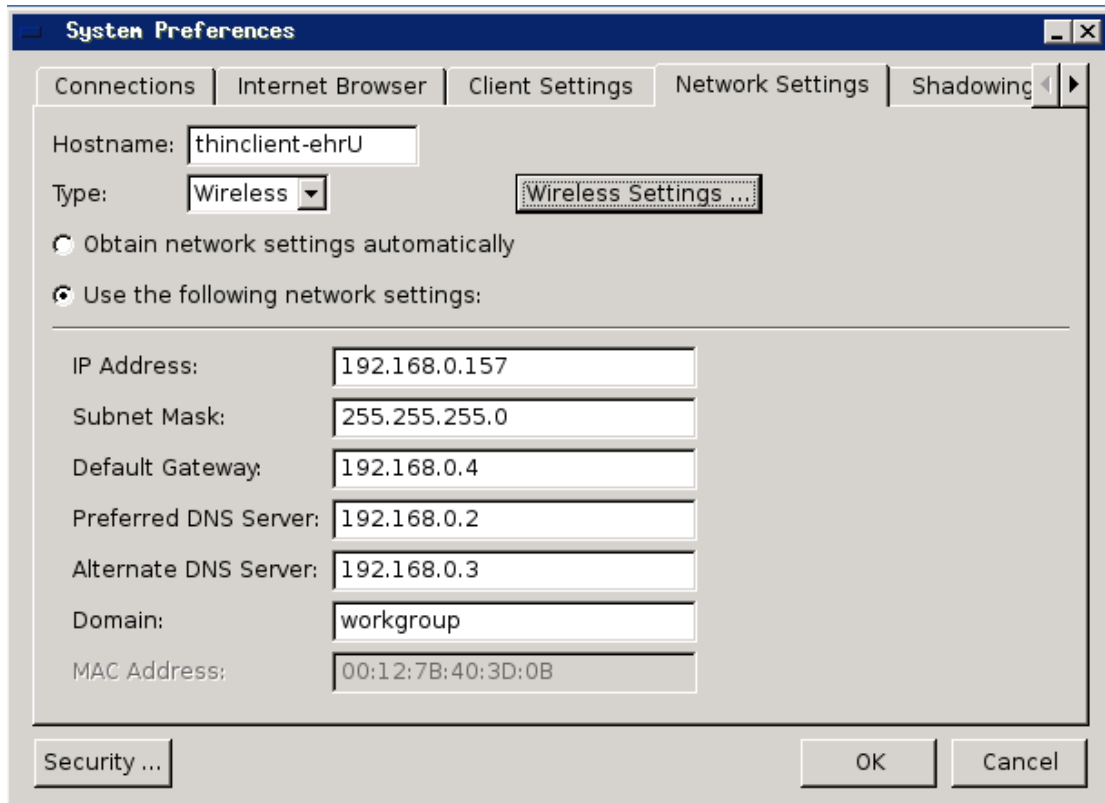


Figure 11: Network Settings

Item	Description
Hostname	Input a name for your thin client.
Type	Choose between wired or wireless. If the thin client does not have wireless capabilities the <i>Wireless Settings</i> button will be disabled.
Network Settings	Allow the thin client to obtain the appropriate network settings automatically or input the settings manually.
IP Address	The network address of the thin client.
Subnet Mask	The subnet where the thin client is connected.
Default Gateway	Input the default gateway.
Preferred DNS Server	Input the address of the Domain Name System Server to be used.
Alternate DNS Server	Input the address of alternate DNS Server to be used in case the Preferred is down.
Domain	Input the parent domain of your thin client.

Wireless

From the *Interface* selection, you can choose *Wireless*. This will enable the *Wireless* button which will open a new dialogue box for you to enter the details of your preferred wireless network.

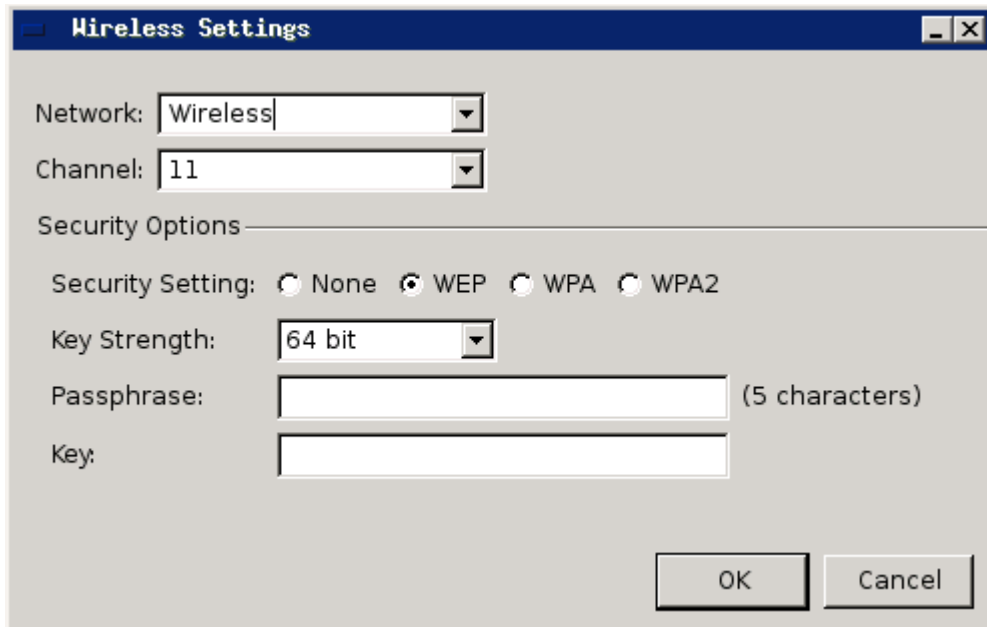


Figure 12: Wireless Settings

Item	Description
Network	Choose from the drop down list the wireless network you would like to connect to. If you have set your network not to broadcast its SID you can type the name in the drop down list text area and it will automatically be added to the drop down list.
Channel	Select the channel on which the wireless network is operating.
Security Settings	Choose the type of security that is being used by your wireless network.

WEP

Item	Description
Key Strength	Choose the length of the password used by the network.
Passphrase	Input the WEP password used to access the network.
Key	This will be generated automatically as you are typing the <i>Passphrase</i> just in case it is needed.

WPA

Item	Description
Encryption	Select the encryption type being used by the wireless network.
Passphrase	Input the WEP password used to access the network.

WPA2

Item	Description
Passphrase	Input the WEP password used to access the network.

Shadowing / Screen Saver

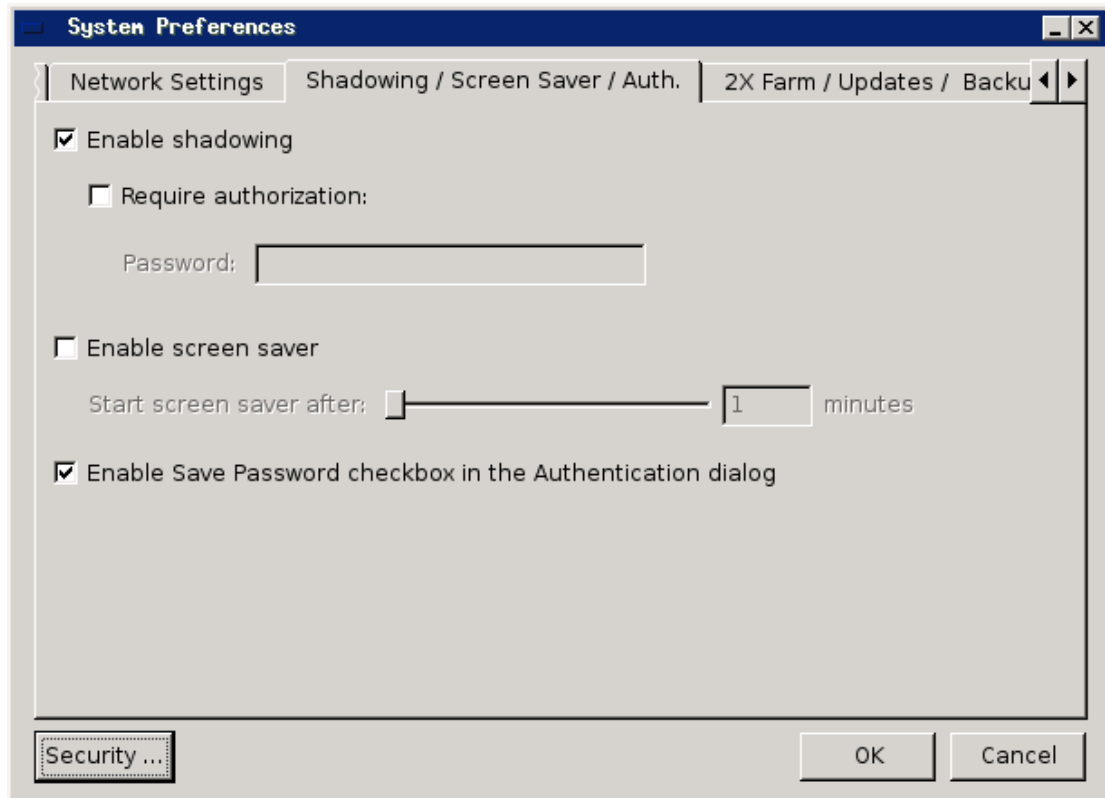


Figure 13: Shadowing / Screen Saver

Item	Description
Enable shadowing	Check to allow remote connections to your desktop.
Require authorization Password	Check to set a password for shadowing. Input the password to be used for desktop shadowing.
Enable screen saver	Check to enable the thin client to load a screen saver after a defined number of minutes
Start screen saver after	Select the number of minutes that have to pass before the thin client loads the screen saver.
Enable Save Password checkbox in the Authentication dialog	Enable this option to allow the user to save a connection password. This will not automatically save passwords. The user must still choose to automatically save the password for the particular connection.

2X ThinClientServer / Updates

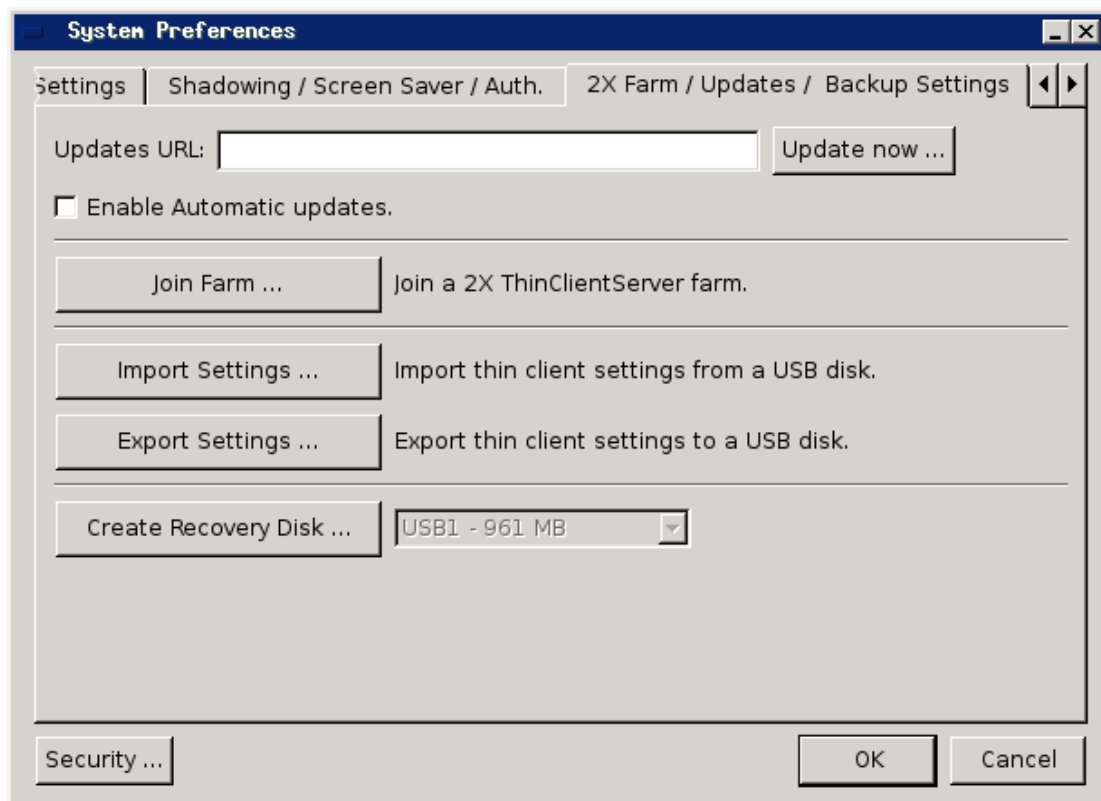


Figure 14: 2X ThinClientServer / Updates

Item	Description
Updates URL:	Input the URL to be used to check for updates.
Enable Automatic updates	Check to allow the thin client to update its operating system automatically.
Update now	Click to start an update. You will be asked to save any current changes before rebooting the system.
Join Farm	Click to join a farm.
Import Settings	Restore thin client settings that were previously backed up to a USB disk
Export Settings	Backup thin client settings to a USB disk
Create Recovery Disk*	Backup the complete 2X ThinClientOS installation to a USB disk.
USB drop down list*	If multiple USB are detected the drop down list will be enabled to show a list of USB disk to be used to create a Recovery Disk.

* - If your device does not support USB booting then you will not be able to use the Create Recovery Disk feature.



To update you 2X ThinClientOS you can use the default settings which will update from a 2X server or you can set up your own HTTP server. If your HTTP server will use IIS make sure that the following steps are taken:

- Right click on the website offering the image and select "Properties"
- Click on HTTP headers and click on "MIME Types"
- In the Registrered MIME types click "New..."
- In the Extension Field and Mime Type filed type "**"

This will allow your HTTP server to serve any type of files.

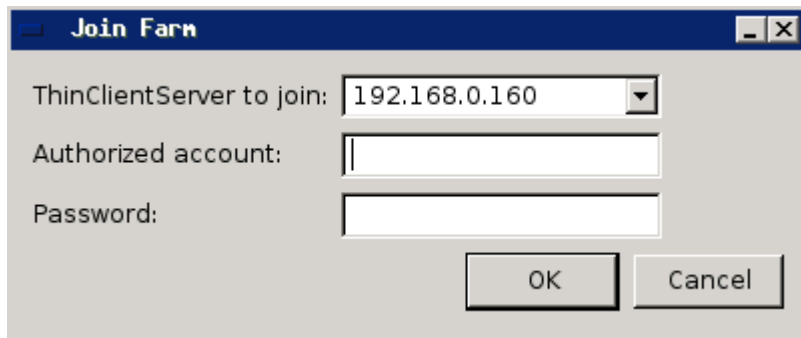


Figure 15: Join Farm

Item	Description
ThinClientServer to join	Select or input the address of the ThinClientServer you would like to join.
Authorized account	Input the username of the ThinClientServer Console Manager administrator account
Password	Input the password of the ThinClientServer Console Manager administrator account

About



Figure 16: About

Item	Description
Vendor	Information about the vendor and the operating system being used.
Computer	Information about the thin client machine will be displayed when available.
Address	Vendor's contact information.

Security

A password can be set so that no one other than the user can change the operating system's settings. To enter a new password, click on the *Security* button. Press *OK* when ready to save your password.

If you want to remove authentication, open *System Preference*, click on the *Security* button and click *OK* leaving both fields empty.

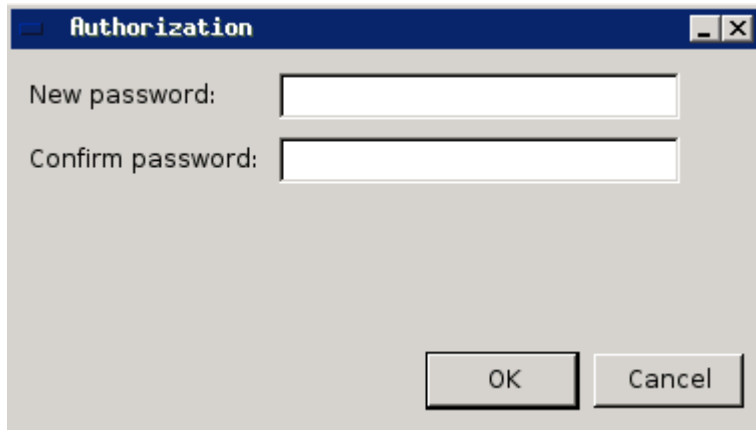


Figure 17: Security

Item	Description
New password	Input the password you want to use to protect you settings.
Confirm password	Retype the password to confirm it.